



M-9 RGBAW Stage Fog Machine User Manual

- ENGLISH



© 2019 Antari Lighting and Effects Ltd.

Safety Information



Please read the following safety information carefully before operating the machine. Information includes important safety information about installation, usage, and maintenance. Pay attention to all warning labels and instructions in this manual and printed on the machine.

If you have questions about how to operate the machine safely, please contact your local Antari dealer for help.

- Keep this device dry.
- Always connect to a grounded circuit to avoid risk of electrocution.
- Before connecting the machine to power, always check the voltage indicated on the machine matches to your local AC voltage. Do not use the machine if AC power voltage does not match.
- Disconnect the machine from AC power before servicing and when not in use.
- If the supply cord is damaged, contact your local Antari dealer for replacement.
- This product is for indoor use only! Do not expose to rain or moisture. If fluid is spilled, disconnect AC power and clean with a damp cloth. If fluid is spilled onto electronic parts, immediately unplug the machine and contact your local Antari dealer for advice.
- No user serviceable and modifiable parts inside. Never try to repair this product, an unauthorized technician may lead the machine to damage or malfunction.
- For adult use only. Children being supervised not to play with the machine. Never leave the machine running unattended.
- The machine is not to be used by persons (including children) with reduced physical, sensory or mental capabilities, or lack of experience and knowledge.
- Installed in a well ventilated area. Provide at least 50 cm space around the machine.
- Never add flammable liquid of any kind to the machine.
- Make sure there are no flammable materials close to the machine while operating.
- Only use Antari fluid. Other fluid may lead to heater clog and malfunction.
- If the machine fails to work, unplug the machine and stop operation immediately. Contact your local Antari dealer for .
- Before transporting the machine, make sure the fluid tank is completely drained.

- Smoke fluid may present health risks if swallowed. Do not drink smoke fluid. Store it securely. In case of eye contact or if fluid is swallowed immediately look for medical advice.

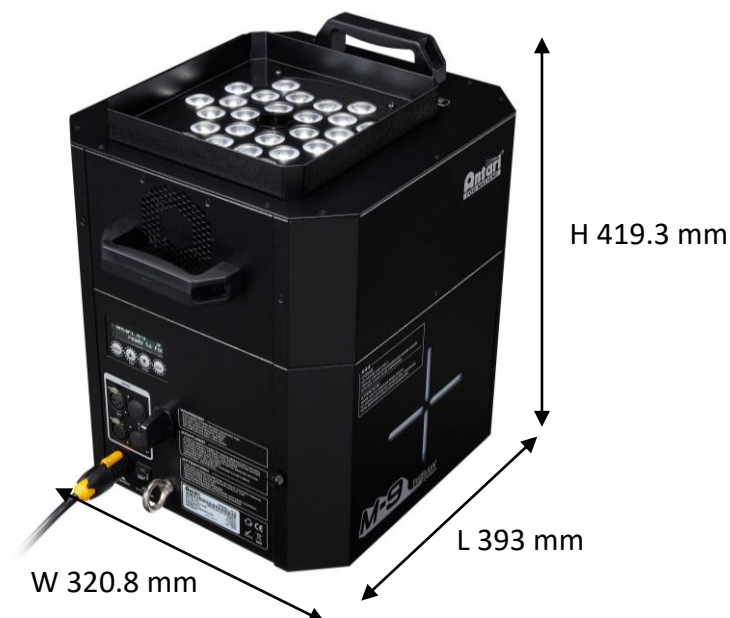
Unpacking and Inspection

Immediately upon receiving the machine, carefully unpack the carton, check all content to ensure that all parts are present and have been received in good condition. If any parts appear damaged or mishandled from shipping, notify the shipper immediately and retain the packing material for inspection.

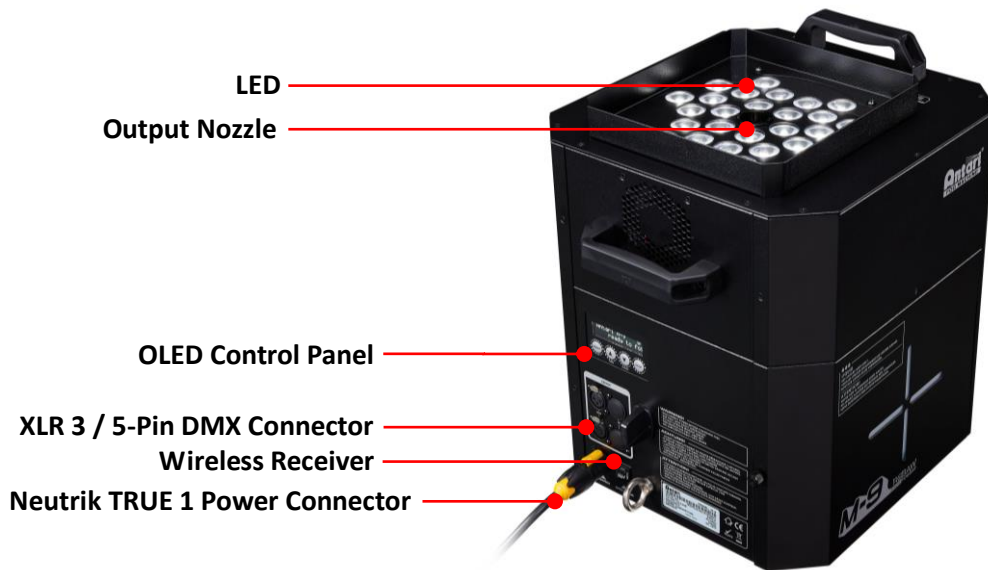
What is included:

- 1 x M-9 RGBAW Fogger
- 1 x W-2 Wireless Remote
- 1 x Power Cord
- 1 x User Manual

Product Dimension



Product Overview



Setting Up

Step 1: Place the machine on a flat surface and in a suitably large area with at least 50 cm open space around the machine.

Step 2: Fill the fluid tank with Antari approved fluid.

Step 3: Connect the machine to suitably rated power supply. To determine the power requirement for the machine refer to the label on the back of the machine.



Always connect the machine to a protected circuit and ensure it is properly grounded to avoid risk of electrocution.

Step 4: Turn on the machine and allow it to heat up. Heat up takes approximately 14 minutes. Once the machine has reached operating temperature, the LCD display will show "Ready To Fog". Now the machine is ready for operation.

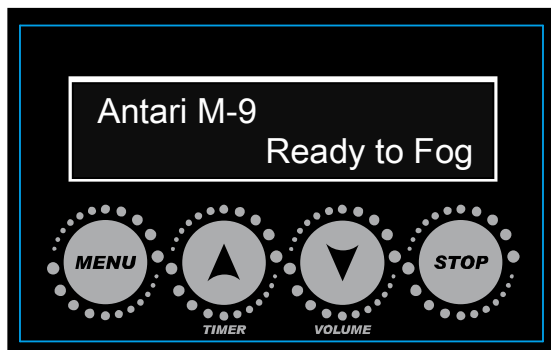
Step 5: To start making fog, locate the **Volume** button on the control panel, and press the button to start making fog.

Step 6: To turn off the machine, press **STOP** button and turn Powercon to the **OFF** position.

Operation

Control Panel Operation

The machine can be operated with an onboard digital control interface



Button	Function
[MENU]	Scroll through setting menu
▲ [UP]/[TIMER]	Up/Activate Timer function
▼ [DOWN]/[VOLUME]	Down/Activate Volume function
[STOP]	Deactivate Timer/Volume function

Control Menu

DMX512 Address: 1	Set DMX address from 1 to 503, 10 channels 1 to 498, 15 channels 1 to 488, 25 channels
DMX Channel Mode 10 Ch	Set DMX channel mode 10, 15 or 25 channels
Stand Alone Set Master	Set machine as Master of Slave unit
Color Mode On	Turn LED On or Off

Color Mode Marco:01	Set LED output color from macro 1 to 25
Color Mode Chase:01	Set LED chase from 1 to 8
Timer Interval 15 Sec	Set interval from 15 to 360 seconds
Timer Duration 5 Sec	Set duration from 1 to 5 seconds
Wireless Setting On	Turn On or Off wireless control
Wireless Setting Button A:M01	Set wireless remote button function macro color 1 to 25 or chase 1 to 8.
Wireless Setting Button B:M01	Set wireless remote button function macro color 1 to 25 or chase 1 to 8.
Wireless Setting Button C:M01	Set wireless remote button function macro color 1 to 25 or chase 1 to 8.
Wireless Setting Button D:M01	Set wireless remote button function macro color 1 to 25 or chase 1 to 8.
LED Setting Fog Only	Setting for LED to turn on with fog only or always on.
LED Fade Out Delay: 0 Sec	Set LED delay time from 0 to 5 seconds.

Run Last Setting	On
------------------	----

Turn On/Off run last setting function

2-7 Sec Jet Mode	2 Sec
------------------	-------

Turn On/Off Jet Mode, set time from 2 to 7 seconds.

W-DMX 512	Off
-----------	-----

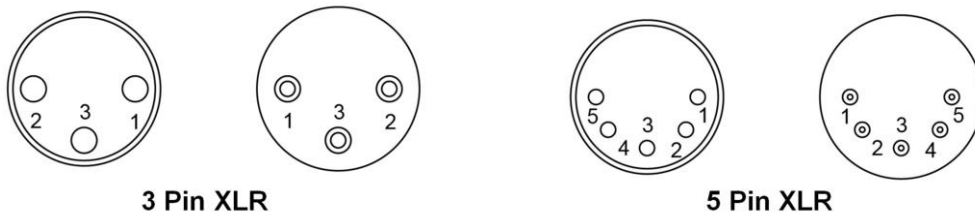
Turn On/Off W-DMX

W-DMX Reset	Yes
-------------	-----

Reset W-DMX connection

DMX Connector Pin Assignment

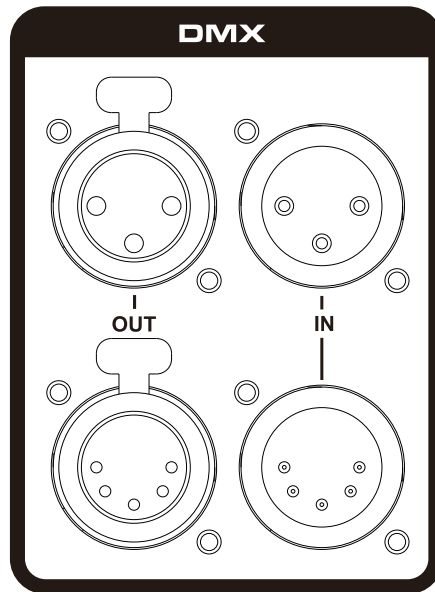
The machine provides 3 or 5 pin XLR connector for DMX connection. The diagram below indicates pin assignment information.



Pin	Function
1	Ground
2	Data-
3	Data+
4	N/A
5	N/A

DMX Operation

Making the DMX Connection – Connect the machine to a DMX controller or to one of the machines in the DMX chain. The machine uses both 3-pin and 5-pin XLR connector for DMX connection, the connector is located on the rear of the machine.



DMX Channel Function

10 Channel Mode

Channel	DMX Value Range	Function
1	0 – 4	Fog Off
	5 – 255	Fog On
2	0-255	Red LED 0-100%
3	0-255	Green LED 0-100%
4	0-255	Blue LED 0-100%
5	0-255	Amber LED 0-100%
6	0-255	White LED 0-100%
7	1-30	Chase 1
	31-60	Chase 2
	61-90	Chase 3
	91-120	Chase 4
	121-150	Chase 5
	151-180	Chase 6
	181-210	Chase 7
	211-255	Chase 8
8	0-255	Chase Speed 0-255 step per min
9	0-255	Master Dimmer 0-100%
10	0-255	Strobe 1-20 Hz

15 Channel Mode

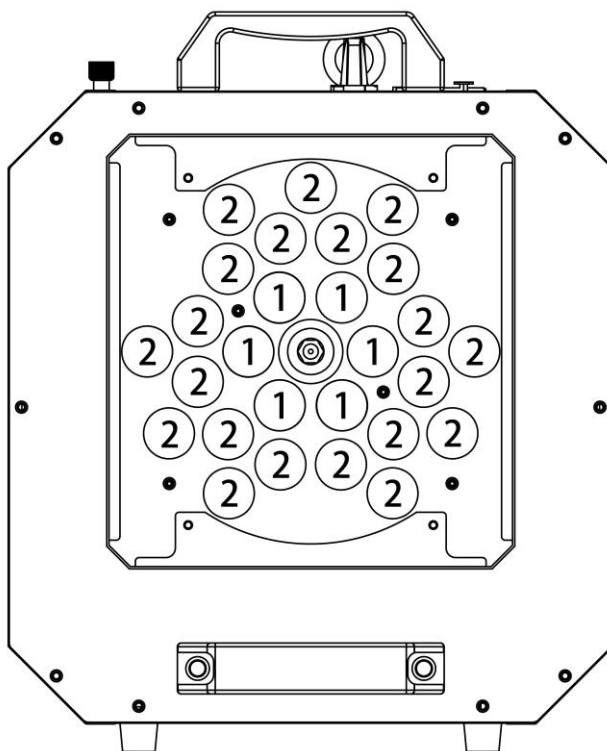
Channel	DMX Value Range	Function
1	0 – 4	Fog Off
	5 – 255	Fog On
2	0-255	Red Zone 1 0-100%
3	0-255	Green Zone 1 0-100%
4	0-255	Blue Zone 1 0-100%
5	0-255	Amber Zone 1 0-100%
6	0-255	White Zone 1 0-100%
7	0-255	Red Zone 2 0-100%
8	0-255	Green Zone 2 0-100%
9	0-255	Blue Zone 2 0-100%
10	0-255	Amber Zone 2 0-100%
11	0-255	White Zone 2 0-100%
12	1-30	Chase 1
	31-60	Chase 2
	61-90	Chase 3
	91-120	Chase 4
	121-150	Chase 5
	151-180	Chase 6
	181-210	Chase 7
	211-255	Chase 8
13	0-255	Chase Speed 0-255 step per min
14	0-255	Master Dimmer 0-100%
15	0-255	Strobe 1-20 Hz

25 Channel Mode

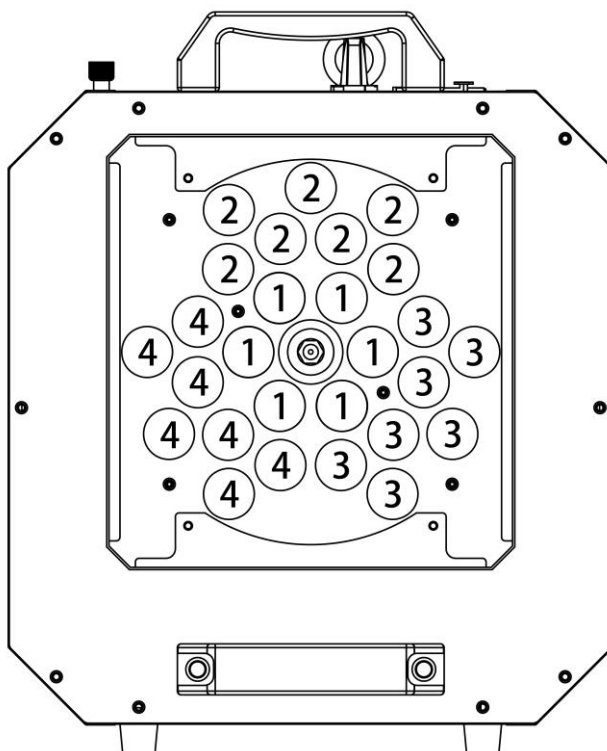
Channel	DMX Value Range	Function
1	0 – 4	Fog Off
	5 – 255	Fog On
2	0-255	Red Zone 1 0-100%
3	0-255	Green Zone 1 0-100%
4	0-255	Blue Zone 1 0-100%

5	0-255	Amber Zone 1 0-100%
6	0-255	White Zone 1 0-100%
7	0-255	Red Zone 2 0-100%
8	0-255	Green Zone 2 0-100%
9	0-255	Blue Zone 2 0-100%
10	0-255	Amber Zone 2 0-100%
11	0-255	White Zone 2 0-100%
12	0-255	Red Zone 3 0-100%
13	0-255	Green Zone 3 0-100%
14	0-255	Blue Zone 3 0-100%
15	0-255	Amber Zone 3 0-100%
16	0-255	White Zone 3 0-100%
17	0-255	Red Zone 4 0-100%
18	0-255	Green Zone 4 0-100%
19	0-255	Blue Zone 4 0-100%
20	0-255	Amber Zone 4 0-100%
21	0-255	White Zone 4 0-100%
22	1-30 31-60 61-90 91-120 121-150 151-180 181-210 211-255	Chase 1 Chase 2 Chase 3 Chase 4 Chase 5 Chase 6 Chase 7 Chase 8
23	0-255	Chase Speed 0-255 step per min
24	0-255	Master Dimmer 0-100%
25	0-255	Strobe 1-20 Hz

LED Zone Control



15 Channel Mode



25 Channel Mode

RDM Control

The M-9 RGBAW Stage Fog Machine is RDM enabled, allowing control system to configure, monitor and manage. See below table for supported RDM parameters

Value	RDM Parameter ID's	GET Allowed	SET Allowed
0x0001	DISC_UNIQUE_BRANCH		
0x0002	DISC_MUTE		
0x0003	DISC_UN_MUTE		
0x0030	STATUS_MESSAGE	0	
0x0050	SUPPORTED_PARAMETERS	0	
0x0051	PARAMETER_DESCRIPTION	0	
0x0060	DEVICE_INFO	0	
0x0070	PRODUCT_DETAIL_ID_LIST	0	
0x0080	DEVICE_MODEL_DESCRIPTION	0	
0x0081	MANUFACTURER_LABEL	0	
0x0082	DEVICE_LABEL	0	0
0x00C0	SOFTWARE_VERSION_LABEL	0	
0x00E0	DMX_PERSONALITY	0	0
0x00E1	DMX_PERSONALITY_DESCRIPTION	0	
0x00F0	DMX_START_ADDRESS	0	0
0x0200	SENSOR_DEFINITION	0	
0x0201	SENSOR_VALUE	0	
0x0400	DEVICE_HOURS	0	
0x1000	IDENTIFY_DEVICE	0	0

Wireless Operation

Wireless remote control system W-2 consist of a transmitter equipped with four buttons to activate four user configurable LED setting and fog; with an onboard receiver attach to the rear panel of M-9 RGBAW.



W-2 Wireless Transmitter



Wireless Receiver

Wireless settings are configurable through onboard control panel, refer to control menu section to setup each buttons.

In an open unobstructed space the effective distance is 50 meters, the effective distance depending on obstacle level is 10-25 meters.

Registering transmitter

The transmitter can be paired or deleted from the receiver. Each receiver can pair up to 10 transmitters. Follow the steps below to pair or delete a transmitter from the receiver.

- Step 1: Power off M-9 RGBAW Fogger
- Step 2: Press and hold [DOWN] button
- Step 3: Turn power on and release [DOWN] button when LCD display blinks
- Step 4: Follow the menu instruction to pair or delete transmitter



Transmitter battery replacement

If the effective distance appears to be decreased, it is possible the battery level is low and require replacement. In order to replace the battery, undo the three screws on the back of transmitter to release the cover. Replace with the same type and specification of battery which is 27A 12V

Fluid

Use Antari FLC water-based Fluid for the best effect for the M-9 RGBAW Fogger. The machine is tested and calibrated with this liquid to get the best output performance. Warranty will be voided if any other type of liquid is used, improper use of liquid may lead to machine failure and malfunction.

Service and Maintenance

- Do not allow the machine to become contaminated.
- Remove dust from air vents with air compressor, vacuum or a soft brush.
- Only use a damp cloth to clean the casing.
- Before storing run distilled water through the system to help avoid condensing the pump or heater.
- It is recommended to run the machine on a monthly basis in order to achieve best performance and output condition.
- Excessive dust, liquid and dirt built up will degrade performance and cause overheating.

Breaker Reset



Disconnect AC power before reset breaker. Only replace fuse with same type and rating.

Step 1: Disconnect AC power

Step 2: Flip breaker to ON position

Step 3: Turn on machine to test

Breaker

100V = 16A 250V

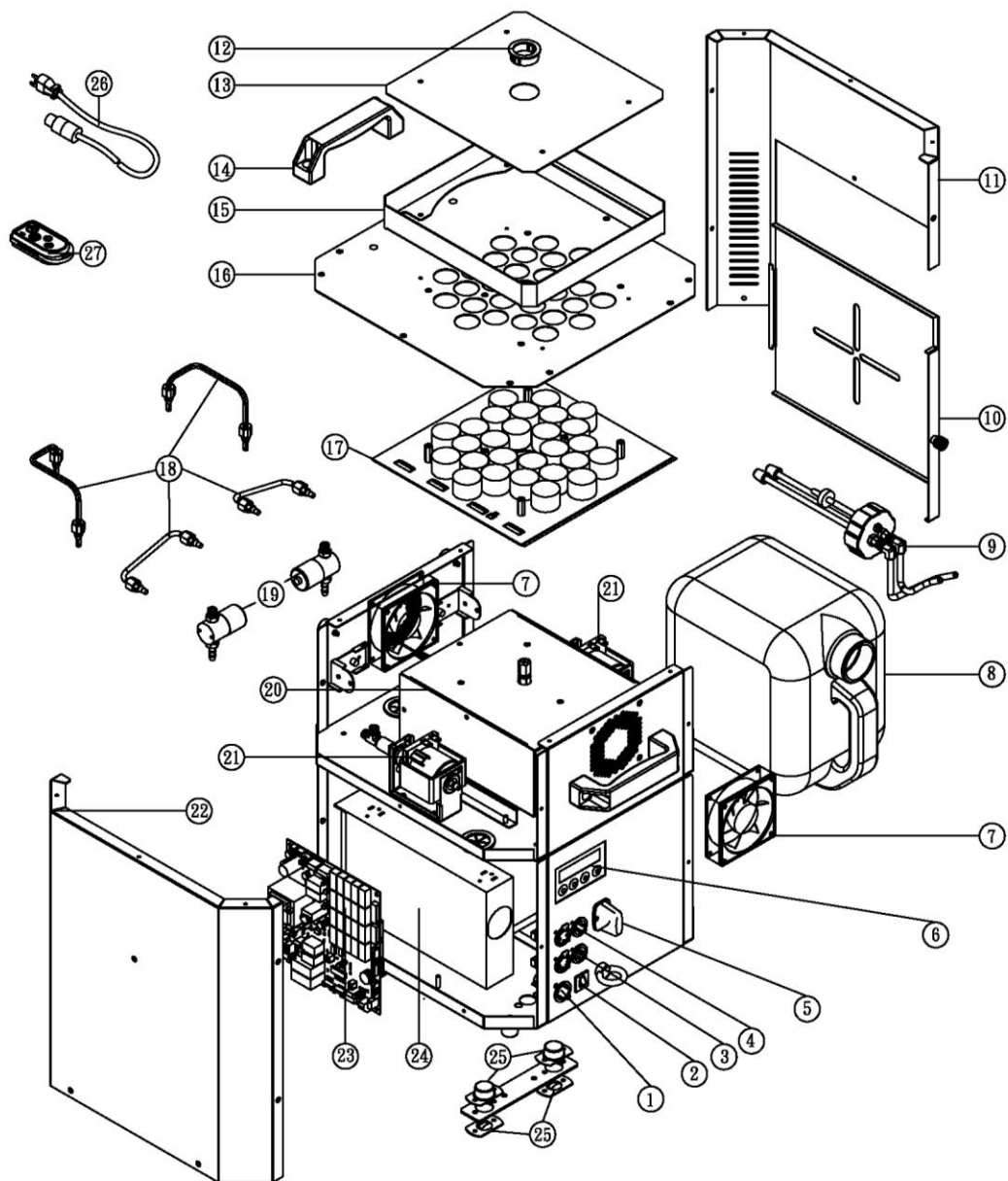
120V = 15A 250V

240V = 9A 250V



Technical Specifications

Input voltage	US model : AC 100-120V, 50 / 60Hz 15.2A EU model : AC 220-240V, 50 / 60Hz 7.6A
Rated power	1870 W
Light Source	27 x 10W LED (5-in-1 LED)
Warm-up time	14 minutes (approx)
Fluid consumption	400 ml / min (100% output)
Fluid tank capacity	6 Liters
Compatible fluid	Antari FLC Super Light Fog Fluid
Ambient temp / range	0°C - 40°C (32°F-104°F)
Output	10 meters height
Control	DMX 512, Timer, Manual, Wireless Master / Slave Wireless DMX (Optional)
DMX channels	10 / 15 / 25 channels
Connection	Neutrik TRUE1 Connector (Power) XLR 3-pin and XLR 5-pin (DMX)
Optional accessories	WTR-90 Wireless DMX
Dimension	L 393 W 320.8 H 419.3 mm
Weight	25 kg (55.1 lbs)



SPARE PARTS OF M-9

- | | | | |
|-------------|-------------------------|-------------|------------------------------|
| ① C04312621 | Power Inlet | ⑩ M00900300 | Steel Case |
| ② C04101400 | Breaker | ⑪ M0090RH00 | Steel Case |
| ③ DMX5P00A5 | P.C Board DMX 5Pin | ⑫ D04013000 | Snap Bushing |
| ④ DMX3P00AB | P.C Board DMX 3Pin | ⑬ C02000740 | LED Protection Sheet |
| ⑤ W-2RA | Wireless Receiver(120V) | ⑭ C02013500 | Handle |
| ⑥ M-9-PCBC | Control P.C Board | ⑮ M00900500 | Steel Case |
| ⑦ M-9-FAN | Fan | | |
| ⑧ TK0806000 | Tank | ⑯ M-9-LUS | Solenoid Valve (Group)(120V) |
| ⑨ M-9-TKC | Tank Cap (Group) | ⑰ M-9-LED | LED (Group) |
| | | ⑱ M-9-H | Heater (Group)(120V) |
| | | ⑲ M-9-LUS | Solenoid Valve (Group)(120V) |
| | | ⑳ M-9-H | Heater (Group)(120V) |
| | | ㉑ PA0EX5A20 | Pump (Group)(120V) |
| | | ㉒ M0090LH00 | Steel Case |
| | | ㉓ M-9-PCB | Main P.C Board(120V) |
| | | ㉔ M-9-POW | LED Power Supply |
| | | ㉕ M-9-HB | Hanging Bracket (Group) |
| | | ㉖ PCA014205 | Power Cord & Plug(120V) |
| | | ㉗ W-2A | Wireless Transmitter(120V) |
| | | ⑰ M-9-LED | LED (Group) |
| | | ⑱ M-9-H | Heater (Group)(120V) |
| | | ⑲ M-9-LUS | Solenoid Valve (Group)(120V) |
| | | ⑳ M-9-H | Heater (Group)(120V) |
| | | ㉑ PA0EX5A20 | Pump (Group)(120V) |
| | | ㉒ M0090LH00 | Steel Case |
| | | ㉓ M-9-PCB | Main P.C Board(120V) |
| | | ㉔ M-9-POW | LED Power Supply |
| | | ㉕ M-9-HB | Hanging Bracket (Group) |
| | | ㉖ PCA014205 | Power Cord & Plug(120V) |
| | | ㉗ W-2A | Wireless Transmitter(120V) |

Antari[®]
FOG MACHINE

M-9 RGBAW
STAGE FOGGER



C08M09000

© 2019 Antari Lighting and Effects Ltd. www.antari.com